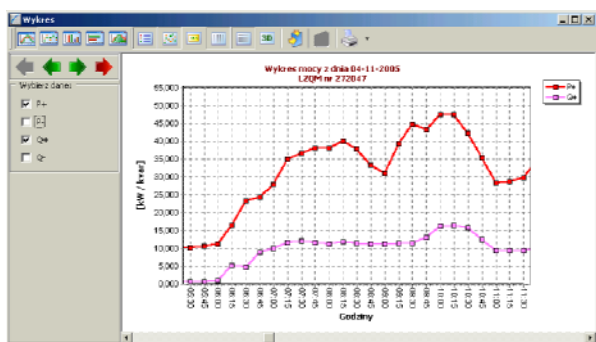
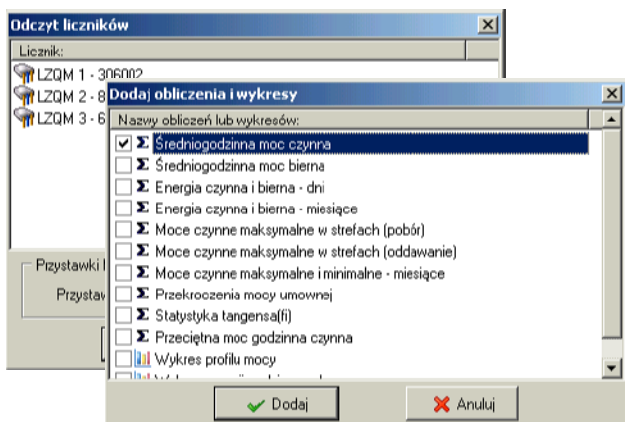


Basic functions of SKADEN software



Taryfa: A23

Miesiąc / Godz.	0	1	2	3	4	5	6	7	8	9	10	11	12	13	14	15	16	17	18	19	20	21	22	23	24
Styczeń	C	C	C	C	C	C	C	A	A	A	A	A	A	C	C	C	B	B	B	B	B	C	C	C	C
Luty	C	C	C	C	C	C	C	A	A	A	A	A	A	C	C	C	B	B	B	B	B	C	C	C	C
Martec	C	C	C	C	C	C	C	A	A	A	A	A	A	C	C	C	B	B	B	B	B	C	C	C	C
Kwiecień	C	C	C	C	C	C	C	A	A	A	A	A	A	C	C	C	C	C	C	B	B	B	C	C	C
Maj	C	C	C	C	C	C	C	A	A	A	A	A	A	C	C	C	C	C	C	B	B	B	C	C	C
Czerwiec	C	C	C	C	C	C	C	A	A	A	A	A	A	C	C	C	C	C	C	B	B	B	C	C	C
Lipiec	C	C	C	C	C	C	C	A	A	A	A	A	A	C	C	C	C	C	C	B	B	B	C	C	C
Sierpień	C	C	C	C	C	C	C	A	A	A	A	A	A	C	C	C	C	C	C	B	B	B	C	C	C
Wrzesień	C	C	C	C	C	C	C	A	A	A	A	A	A	C	C	C	C	C	C	B	B	B	C	C	C
Październik	C	C	C	C	C	C	C	A	A	A	A	A	A	C	C	C	B	B	B	B	B	C	C	C	C
Listopad	C	C	C	C	C	C	C	A	A	A	A	A	A	C	C	C	B	B	B	B	B	C	C	C	C
Grudzień	C	C	C	C	C	C	C	A	A	A	A	A	A	C	C	C	B	B	B	B	B	C	C	C	C

Wykres: Średniogodzinna moc czynna [kW]

Wykres: Średniogodzinna moc bierna [kVAr]

Wykres: Energia czynna i bierna - dni

Wykres: Energia czynna i bierna - miesiące

Wykres: Moce czynne maksymalne w strefach (pobór)

Wykres: Moce czynne maksymalne w strefach (oddawanie)

Wykres: Moce czynne maksymalne i minimalne - miesiące

Wykres: Przekroczenia mocy umownej

Wykres: Statystyka tangensa(φ)

Wykres: Przeciętna moc godzinna czynna

Wykres: Wykres profilu mocy

Raport: Średniogodzinna moc

Średniogodzinna moc czynna [kW]

Wyliczono dnia: 05-11-07 09:12:37

Obliczenia za okres: 2005-11-01 - 2005-11-07

S - strefa Σ - suma mocy (energia)

Godzina	S		Σ		S		Σ		S		Σ		S		Σ	
	W	Bi	W	Bi	W	Bi	W	Bi	W	Bi	W	Bi	W	Bi	W	Bi
01-11	0.19	0.26	0.27	0.37	0.47	0.64	0.51	0.69	0.88	1.19	1.24	1.63	2.19	2.24	2.94	3.94
02-11	0.19	0.26	0.27	0.37	0.47	0.64	0.51	0.69	0.88	1.19	1.24	1.63	2.19	2.24	2.94	3.94
03-11	0.19	0.26	0.27	0.37	0.47	0.64	0.51	0.69	0.88	1.19	1.24	1.63	2.19	2.24	2.94	3.94
04-11	0.19	0.26	0.27	0.37	0.47	0.64	0.51	0.69	0.88	1.19	1.24	1.63	2.19	2.24	2.94	3.94
05-11	0.19	0.26	0.27	0.37	0.47	0.64	0.51	0.69	0.88	1.19	1.24	1.63	2.19	2.24	2.94	3.94
06-11	0.19	0.26	0.27	0.37	0.47	0.64	0.51	0.69	0.88	1.19	1.24	1.63	2.19	2.24	2.94	3.94
07-11	0.19	0.26	0.27	0.37	0.47	0.64	0.51	0.69	0.88	1.19	1.24	1.63	2.19	2.24	2.94	3.94
08-11	0.19	0.26	0.27	0.37	0.47	0.64	0.51	0.69	0.88	1.19	1.24	1.63	2.19	2.24	2.94	3.94
09-11	0.19	0.26	0.27	0.37	0.47	0.64	0.51	0.69	0.88	1.19	1.24	1.63	2.19	2.24	2.94	3.94
10-11	0.19	0.26	0.27	0.37	0.47	0.64	0.51	0.69	0.88	1.19	1.24	1.63	2.19	2.24	2.94	3.94
11-11	0.19	0.26	0.27	0.37	0.47	0.64	0.51	0.69	0.88	1.19	1.24	1.63	2.19	2.24	2.94	3.94
12-11	0.19	0.26	0.27	0.37	0.47	0.64	0.51	0.69	0.88	1.19	1.24	1.63	2.19	2.24	2.94	3.94
13-11	0.19	0.26	0.27	0.37	0.47	0.64	0.51	0.69	0.88	1.19	1.24	1.63	2.19	2.24	2.94	3.94
14-11	0.19	0.26	0.27	0.37	0.47	0.64	0.51	0.69	0.88	1.19	1.24	1.63	2.19	2.24	2.94	3.94
15-11	0.19	0.26	0.27	0.37	0.47	0.64	0.51	0.69	0.88	1.19	1.24	1.63	2.19	2.24	2.94	3.94
16-11	0.19	0.26	0.27	0.37	0.47	0.64	0.51	0.69	0.88	1.19	1.24	1.63	2.19	2.24	2.94	3.94
17-11	0.19	0.26	0.27	0.37	0.47	0.64	0.51	0.69	0.88	1.19	1.24	1.63	2.19	2.24	2.94	3.94
18-11	0.19	0.26	0.27	0.37	0.47	0.64	0.51	0.69	0.88	1.19	1.24	1.63	2.19	2.24	2.94	3.94
19-11	0.19	0.26	0.27	0.37	0.47	0.64	0.51	0.69	0.88	1.19	1.24	1.63	2.19	2.24	2.94	3.94
20-11	0.19	0.26	0.27	0.37	0.47	0.64	0.51	0.69	0.88	1.19	1.24	1.63	2.19	2.24	2.94	3.94
21-11	0.19	0.26	0.27	0.37	0.47	0.64	0.51	0.69	0.88	1.19	1.24	1.63	2.19	2.24	2.94	3.94
22-11	0.19	0.26	0.27	0.37	0.47	0.64	0.51	0.69	0.88	1.19	1.24	1.63	2.19	2.24	2.94	3.94
23-11	0.19	0.26	0.27	0.37	0.47	0.64	0.51	0.69	0.88	1.19	1.24	1.63	2.19	2.24	2.94	3.94
24-11	0.19	0.26	0.27	0.37	0.47	0.64	0.51	0.69	0.88	1.19	1.24	1.63	2.19	2.24	2.94	3.94
25-11	0.19	0.26	0.27	0.37	0.47	0.64	0.51	0.69	0.88	1.19	1.24	1.63	2.19	2.24	2.94	3.94
26-11	0.19	0.26	0.27	0.37	0.47	0.64	0.51	0.69	0.88	1.19	1.24	1.63	2.19	2.24	2.94	3.94
27-11	0.19	0.26	0.27	0.37	0.47	0.64	0.51	0.69	0.88	1.19	1.24	1.63	2.19	2.24	2.94	3.94
28-11	0.19	0.26	0.27	0.37	0.47	0.64	0.51	0.69	0.88	1.19	1.24	1.63	2.19	2.24	2.94	3.94
29-11	0.19	0.26	0.27	0.37	0.47	0.64	0.51	0.69	0.88	1.19	1.24	1.63	2.19	2.24	2.94	3.94
30-11	0.19	0.26	0.27	0.37	0.47	0.64	0.51	0.69	0.88	1.19	1.24	1.63	2.19	2.24	2.94	3.94
31-11	0.19	0.26	0.27	0.37	0.47	0.64	0.51	0.69	0.88	1.19	1.24	1.63	2.19	2.24	2.94	3.94
Σ (Poj)	22.16	28.53	22.89	28.12	27.89	48.13	183.23	163.82	115.18	115.18	115.18	115.18	115.18	115.18	115.18	115.18
Σ (Poj)	39.19	50.22	34.81	43.12	43.12	81.86	302.46	277.64	190.36	190.36	190.36	190.36	190.36	190.36	190.36	190.36

- Data readout from MKi communication module.
- Data readout from KWMS3B adder (locally using RS232 or modem)
- Storing of the measured data in data base (energy counting state, maximum power value , load profile)
- Automatic readout of measured data according to the reading schedule.
- Devices base
- Tariffs base
- Generating of diagrams according to profile data. The diagrams are generated both for single meters and for groups of meters.
- Making of calculations according to profile data for single devices and for groups of devices. In case of using KWMS adder it is possible to make calculations from the group of adders inputs.
- SKADEN software gives possibility of generating reports as follows:
 - 24 hour report about used active and reactive energy.
 - Monthly report about used active and reactive energy..
 - Monthly report about maximal and minimal power.
 - Report about maximal power for the period defined by user.
 - Report about power exceed.
- Hour report about active and reactive energy for the period defined by user.