

## GSM-1, GSM-3

### Communication modules for LAP and EABM meters working in SMS mode



#### Application

**GSM-1 and GSM-3 communication modules** are intelligent communication devices designed for remote data transmission in both directions for LAP and EABM electricity meters. Both devices are designed as dedicated compact modules for installing inside of housing of meter's clamp box.

GSM-1 i GSM-3 may be installed for electricity meter at any time of its exploitation and without need of removing its seals. Communication with the meters is performed using optical interface.

GSM-1 and GSM-3 communication modules work in standard GSM network.

All billing data is sent using short text sms message which gives possibility of: (Figure 1):

- singular reading using cellphone,
- reading and controlling of SHOOK G system.

#### GSM-1 and GSM-3 functions

Communication modules allow remote reading of billing data and remote controlling of other measuring functions.

Controlling and data reading with GSM-1 and GSM-3 may be performed using SHOOK G software.

For configuring and programming GSM-1 and GSM-3 modules it is necessary to:

- enter PIN SIM-card to activate GSM network,
- enter cellphone numbers (up to 16), for remote data reading using GSM-1 and GSM-3 modules.

GSM-1 and GSM-3 communication modules may be configured for remote data reading using following modes:

- Readout on demand  
or
- Automatic readout according to schedule

Above mentioned readings may contain:

- serial number of electricity meter used for data reading,
- date and time of data reading,
- state of energy counters,
- information about damages (voltage drops or influence of high magnetic field)

GSM-1 and GSM-3 communication modules give possibility of remote controlling of tariffs and power switch.

*Note:: GSM-1 and GSM-3 modules allow communication within GSM network of chosen operator.*

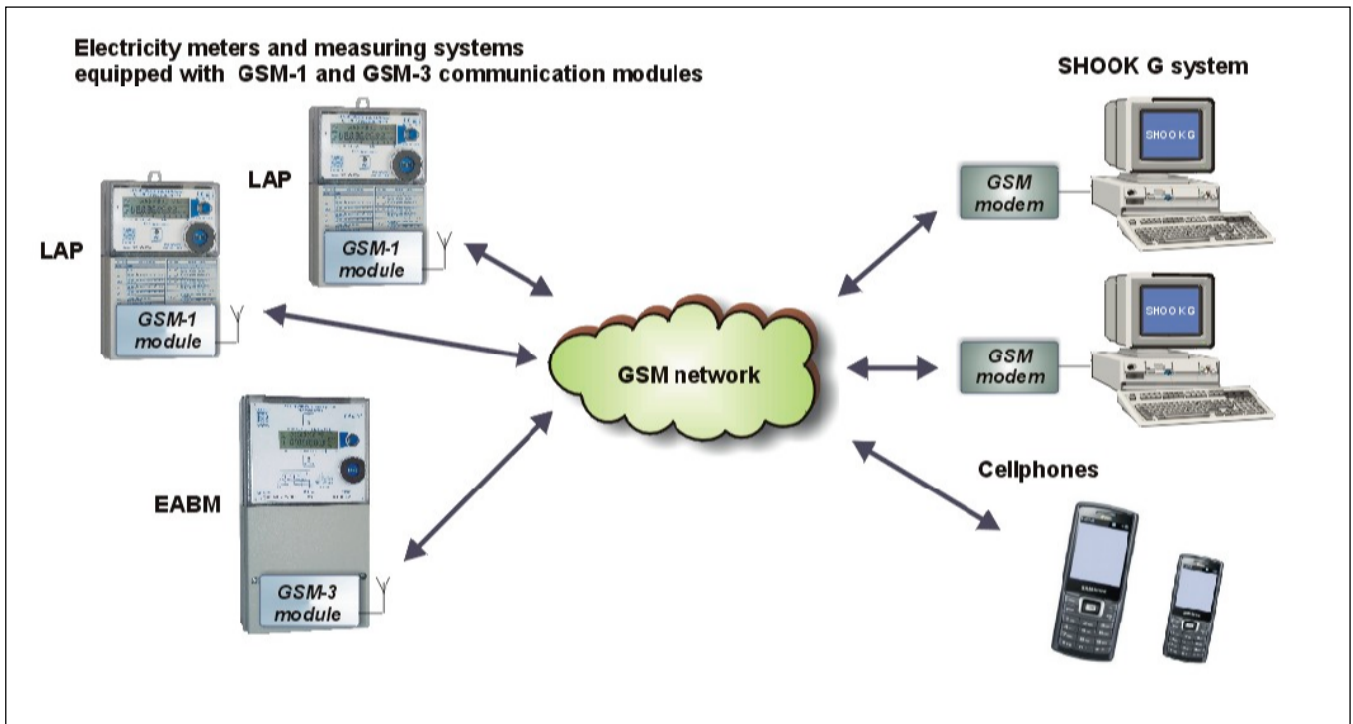


Figure. 1. Schematic of data transmission from LAP and EABM electricity meters equipped with GSM-1 and GSM-3 communication modules.

### GSM-1 i GSM-3 technical data

	GSM-1 for LAP electricity meter	GSM-3 for EABM electricity meter
Voltage	230 V AC +/- 10%	3 x 100 V AC ÷ 3 x 400 V AC +/- 10%
Frequency	50 Hz	50 Hz
Power consumption	< 4 VA (in transmission mode)	< 6 VA (in transmission mode)
GSM standards	E-GSM 900, DCS 1800	E-GSM 900, DCS 1800
Emission	Class 4 (2 W) – E-GSM 900 Class 1 (1 W) – DCS 1800	Class 4 (2 W) – E-GSM 900 Class 1 (1 W) – DCS 1800
SIM cards	1,8 V i 3 V	1,8 V i 3 V
Electromagnetic compatibility	PN-EN 55024:2000, PN-EN 55022:2006	PN-EN 55024:2000, PN-EN 55022:2006
Dimensions (with clamp box cover)	130 x 138 x 73 mm lub 130 x 113 x 72 mm [width./height./depth.]	162 x 158 x 73 mm [width./height./depth.]
Weight (with clamp box cover)	~ 0,28 kg	~ 0,38 kg

GSM-1 and GSM-3 communication modules are supplied with clamp box cover.

ZEUP POZYTON reserves the right to change without notice all features according to products improvements.